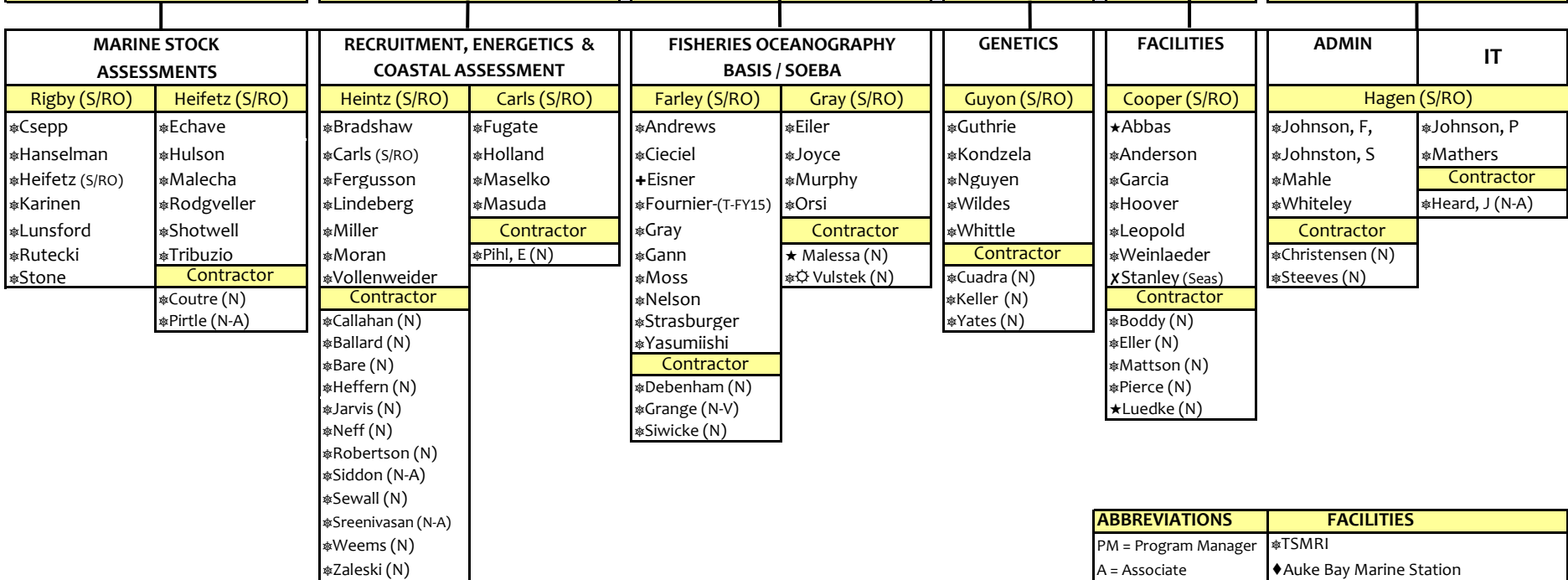
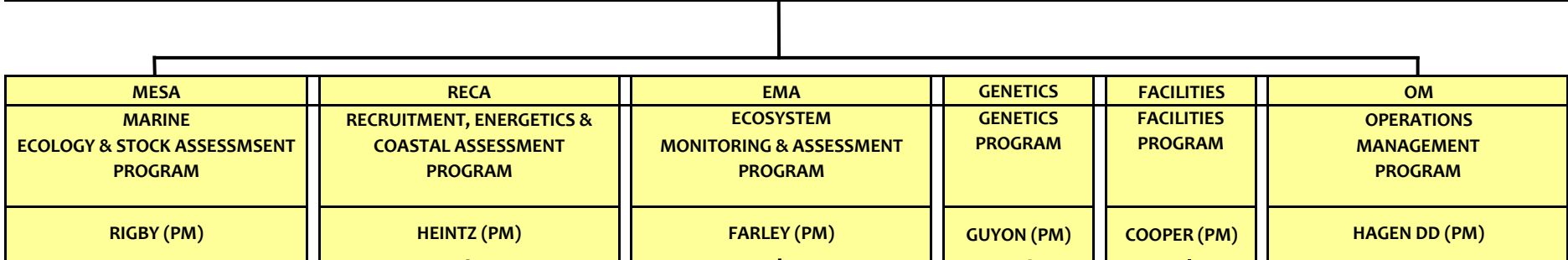


F/AKC4*	<b>AUKE BAY LABORATORIES ORGANIZATIONAL CHART</b>	FS7400
April 17, 2015		
MUNDY - DIRECTOR (S/RO)		



ABL Organization Totals	
FTE	62
Term	1
Associate	4
Contractors	26
Students	0
Volunteer	1
<b>TOTAL Active</b>	<b>94</b>

ABBREVIATIONS	FACILITIES
PM = Program Manager	*TSMRI
A = Associate	◆ Auke Bay Marine Station
N = Non-NOAA	★ Little Port Walter Marine Station
RO = Rating Official	⊙ Auke Creek Research Station
S = Supervisor	✕ Pribilof/St Paul /St. George Islands
St = Student Appointment	✚ Bldg 4, Sand Point, Seattle
T = Term Appointment	Juneau Support
V = Volunteer	
	CODES
	F/AKC4 = ABL Routing Code
	* Organization Code
	■ Operating Unit Number